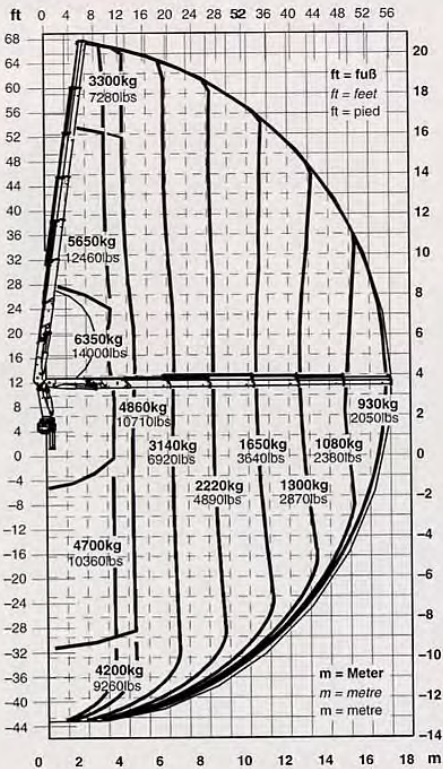


## PK 24500 E



## Technical specifications (DIN 15018 H1-B3): PK 24500

Max. lifting moment	173600 ft. lbs	235 kNm/24.0 mt
Max. lifting capacity at 20°		
mainboom position	18080 lbs / (8200 kg)	at 8' 10" 2.7 m
Max. hydraulic outreach	55' 5"	16.9 m
Maximum outreach (with fly jib)	82' 4"	25.1 m
Slewing angle	400°	

### Standard crane:

Slewing torque	20280ft.lbs	27.5 KNm 2.8 mt
Outreach	26' 7" 8.1 m	
Stabilizer spread	19' 8" 6.0 m	
Fitting space required	3' 9" 1.1 m	
Width folded	8' 3" 2.5 m	
Operating pressure	4420 psi 305 bar	
Recommended pump capacity	12 US.gal./min. 10 imp.gal./min. 45 l/min.	
by radio remote control	23.8 US.gal./min. 19.8 imp.gal./min. 90 l/min.	
Dead weight (without mounting parts, pump and oil)	6130 lbs	2780 kg



**Max. lifting capacities:**

**Outreach Capacity**

PK 24500 A		
<i>hydraulic</i>		
2.7 m	8200 kg	8' 10" 18080 lbs
4.1 m	5720 kg	13' 5" 12610 lbs
6.0 m	3850 kg	19' 8" 8490 lbs
7.9 m	2890 kg	25' 11" 6370 lbs

**PK 24500 B**

<i>hydraulic</i>		
2.7 m	8000 kg	8' 0" 17640 lbs
4.1 m	5470 kg	13' 5" 12060 lbs
6.0 m	3640 kg	19' 8" 8020 lbs
8.0 m	2680 kg	26' 3" 5910 lbs
10.1 m	2110 kg	33' 2" 4650 lbs

**PK 24500 C**

<i>hydraulic</i>		
2.9 m	7400 kg	9' 6" 16310 lbs
4.2 m	5240 kg	13' 9" 11550 lbs
6.1 m	3450 kg	20' 0" 7610 lbs
8.1 m	2820 kg	26' 7" 5510 lbs
10.2 m	1930 kg	33' 6" 4250 lbs
12.3 m	1580 kg	40' 4" 3480 lbs

**Outreach Capacity**

manual		
14.8 m	1250 kg	47' 3" 2760 lbs
16.6 m	1020 kg	54' 6" 2250 lbs
18.9 m	770 kg	62' 0" 1700 lbs
21.2 m	480 kg	69' 7" 1060 lbs

**PK 24500 D**

<i>hydraulic</i>		
3.2 m	6500 kg	10' 6" 14330 lbs
4.3 m	5040 kg	14' 1" 11110 lbs
6.2 m	3280 kg	20' 4" 7230 lbs
8.2 m	2350 kg	26' 11" 5180 lbs
10.2 m	1780 kg	33' 6" 3920 lbs
12.4 m	1420 kg	40' 8" 3130 lbs
14.5 m	1200 kg	47' 7" 2650 lbs

**manual**

16.7 m	960 kg	54' 9" 2120 lbs
19.0 m	770 kg	62' 4" 1700 lbs
21.3 m	480 kg	69' 11" 1060 lbs

**Outreach Capacity**

PK 24500 E		
<i>hydraulic</i>		
3.3 m	6350 kg	10' 10" 14000 lbs
4.4 m	4860 kg	14' 5" 10710 lbs
6.3 m	3140 kg	20' 8" 6925 lbs
8.2 m	2220 kg	26' 11" 4890 lbs
10.3 m	1650 kg	33' 8" 3640 lbs
12.4 m	1300 kg	40' 8" 2870 lbs
14.6 m	1080 kg	47' 11" 2380 lbs
16.8 m	930 kg	55' 1" 2050 lbs

**manual**

19.0 m	770 kg	62' 4" 1700 lbs
21.3 m	480 kg	69' 11" 1060 lbs

The reaches are indicated for a 20° main boom position and are therefore not the maximum ones.

